



ANNUAL REPORT 2018





CONTENTS

03

Who we are

05

Chairman's letter

06

What we've
achieved

08

CEO's letter

09

Our model for
change

11

Tracking our
progress:
Prostate Cancer

15

Tracking our
progress:
Testicular Cancer

17

Tracking our
progress:
Mental health &
suicide prevention

22

Our community

23

Highlights

25

Our financials

37

Governance



WHO WE ARE

**THE ONLY CHARITY
TACKLING MEN'S HEALTH
ON A GLOBAL SCALE**

**THE LARGEST
MOVEMENT OF
ITS KIND**

**FIGHTING THE
MEN'S HEALTH
CRISIS, HEAD ON**

**CHANGING THE GAME
IN CANCER RESEARCH**

**IMPROVING MEN'S
QUALITY OF LIFE**

**THE ONES
TO WATCH**



OUR VALUES

FUN

We have fun
doing good

RESPECT

We are caring
and inclusive

TEAM MOVEMBER

We enable every person
to be their best

HUMBLE

We should never
forget why we
are here

REMARKABLE EXPERIENCE

We create remarkable
experiences for our
people and our
community

CHANGE AGENT

We must think and act
differently to have an
everlasting impact on the
face of men's health

OUR MISSION

Help men live happier, healthier longer lives

WE STAND FOR:

Our fathers, partners, brothers and friends are facing a health crisis that isn't being talked about.

- On average, men die six years earlier than women
- Prostate cancer rates will double in the next 15 years
- Testicular cancer rates have already doubled in the last 50 years
- Every minute, a man dies from suicide

We're here to do something about it before it's too late.

WE KNOW THAT:

It's time for men to take action on their health.

Global collaboration is the key to accelerating change for men's health.

Too many fathers, brothers and sons are dying by suicide. Suicide is preventable.

Quality of life is just as important as longer life.

WE WANT MEN TO:

1. Make man time

Stay connected. Your mates are important and spending time with them is good for you. Catch up regularly, check in and make time.

2. Have open conversations

You don't need to be an expert and you don't have to be the sole solution, but being there for someone, listening and giving your time can be life-saving.

3. Know the numbers

At 50, talk to your doctor about prostate cancer and whether it's right for you to have a PSA test. If you are of African or Caribbean descent or have a father or brother with prostate cancer, you should be having this conversation at 45. Know your numbers, know your risk, talk to your doctor.

4. Know thy nuts. Simple.

Get to know what's normal for your testicles. Give them a check regularly and go to the doctor if something doesn't feel right.

5. Move, more.

Add more activity to your day. Do more of what makes you feel good. Take a walking meeting instead of a stuffy conference room, take the stairs, cycle to work instead of driving, get off the train a stop or two earlier.

OUR 2030 GOALS

Halve the life expectancy gap between men and women

Reduce the number of men dying prematurely by 25%

Halve the number of men dying from prostate cancer and testicular cancer

Reduce the rate of male suicides by 25%



CHAIRMAN'S LETTER

It's hard to believe that this year is my fifth as Chairman of the Movember Foundation. Over these years, I have watched the organisation go from strength to strength in the fight for men's health.

Since its inception, the foundation has funded more than 1,200 game-changing men's health projects in prostate cancer, testicular cancer, mental health and suicide prevention.

As for this year, we've made many breakthroughs – all thanks to the community of over 300,000 Mo Bros and Mo Sistas, who've collectively raised \$87 million in the past 12 months alone. Their dedication (as well as our own efforts in innovation, accountability and transparency) has resulted in global recognition.

Namely, the organisation climbed four places in the NGO Advisor Top 500 Rankings – coming in at number 45 out of non-government organisations across the globe. The rankings

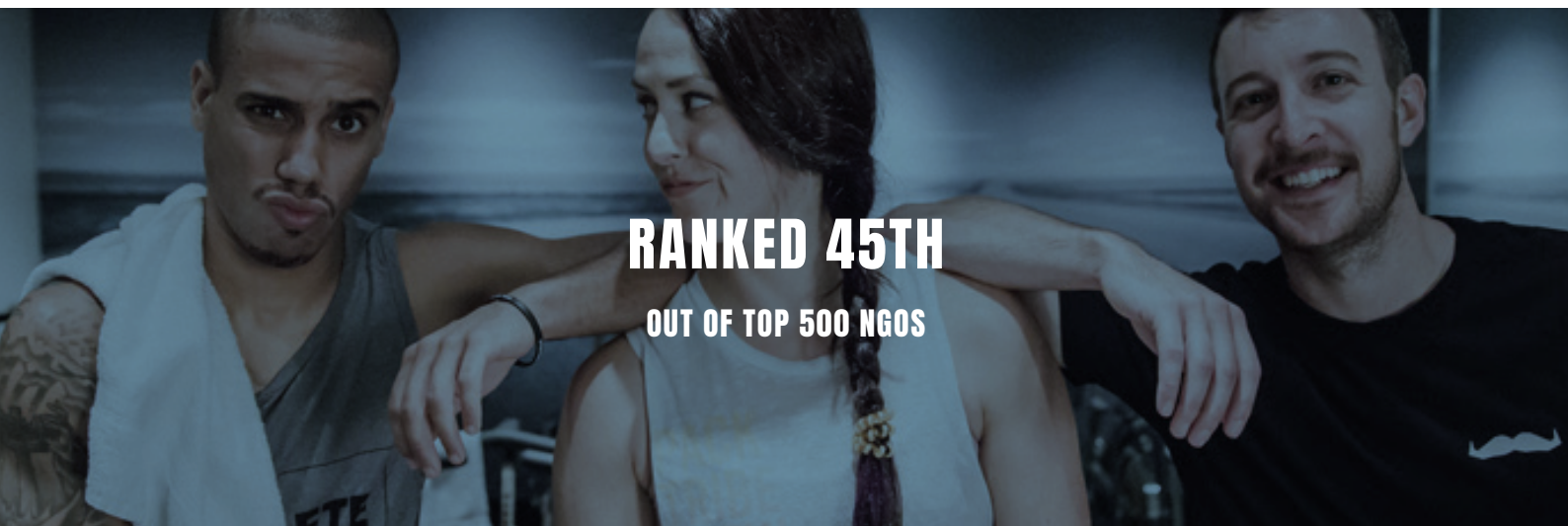
measure impact, innovation and governance – using evidence-based quantitative analysis through qualitative research. That's a climb of 34 places since 2010 – the year I first joined the board.

While there is much to be proud of, a great challenge lies ahead. Our 2030 goals require even greater dedication than before – as we fight to stop men dying too young.

As such, we will continue to bring the “brightest minds together, listen to the community, and advocate for all men. With this approach, I know we can continue to change the face of men's health.

JOHN HUGHES
CHAIRMAN

WHAT WE'VE ACHIEVED



RANKED 45TH
OUT OF TOP 500 NGOS

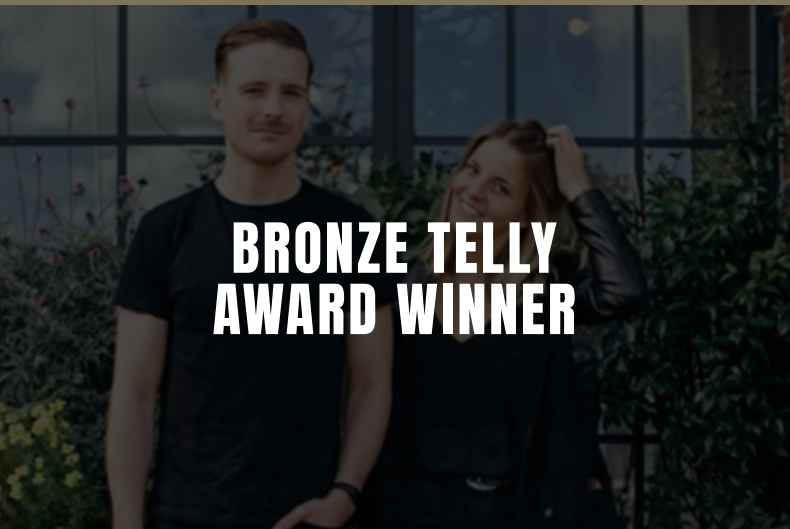
**GOLD STEVIE
AWARD WINNER**

AMERICAN BUSINESS AWARDS



**CHARITY FILM
AWARDS WINNER**

FOR "UN-MUTE HIM" CAMPAIGN TO
MARK SUICIDE PREVENTION MONTH



**BRONZE TELLY
AWARD WINNER**

**CAMPAIGN MEDIA
WINNER**

2018 IN NUMBERS




300,000+

**MO BROS AND
MO SISTAS**

\$87M

**AUD RAISED FOR
MEN'S HEALTH**



1,262,469

**NUMBER
OF DONATIONS**

1,200+

**MEN'S HEALTH
PROJECTS**



1 MISSION

**TO STOP MEN DYING
TOO YOUNG**

23

**MEN'S HEALTH
PARTNERS**



20

COUNTRIES

6

**MOVEMBER FOUNDATION
OFFICES**



10

**MOVEMBER FOUNDATION
OFFICE DOGS**



CEO'S LETTER

I am really proud of what the Movember Foundation has achieved in 2017. We are further increasing the positive impact that we are having on men's health and our work to create real and sustainable change continues to build momentum.

A great example of this was being backed by the Australian Government – as their Federal Budget committed AUD \$37.6 million in funding to expand The Way Back Support Service over the next 4 years.

Initially funded by the Movember Foundation and implemented by our Australian men's health partner, beyondblue, The Way Back Support Service dates back to 2013 – and was initially launched with AUD \$2.25 million. We saw a gap that needed to be filled, given that every minute somewhere in the world, a man takes his own life. This solution will give the Australian population the suicide prevention resources they need, when they need it most.

An inspiring example of the Movember Foundation's important role as a 'catalytic funder' – our success with The Way Back Support Service illustrates a key aspect of our impact investment strategy. We invest in innovative programs that have the possibility to create real, long-term impact for men's health, and

find ways to catalyse implementation to be delivered in an area of need – scaling up what works to provide the greatest reach and benefits.

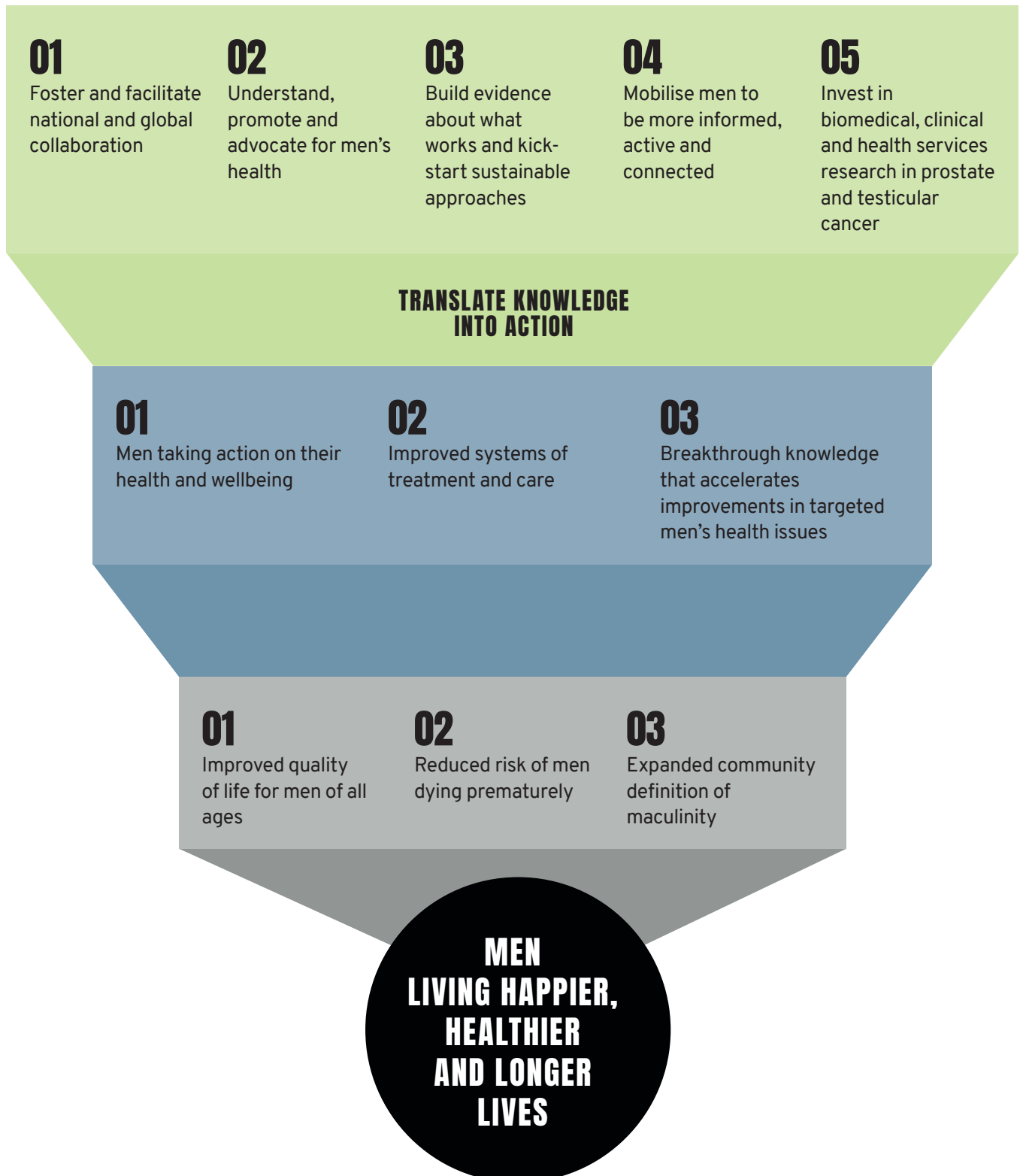
My sincerest thanks to all for what was a huge year of progress. Our supporters have grown from the ground up – from men and women in communities (our true rockstars), to clinicians, doctors, nurses, partners, carers – and now government bodies. That is true success.

As I look towards 2018, I am reminded of the great challenge in men's health that lies ahead. Luckily, we have an incredibly talented group of individuals at the helm. To these people – our valued Movember Foundation staff – thank you for 2017, and onwards and upwards in 2018. Without you, the impact we continue to achieve would not be possible.

OWEN SHARP
CEO

OUR MODEL FOR CHANGE

This is our strategy for tackling the biggest challenges in men's health.



MEN'S HEALTH PROMOTION

Our Health Promotion Plans address the following challenges consistent across all of our cause areas:

The need for men to:

- Be aware of the physical and mental health risks they face, at different ages and stages of life
- Recognise the signs and symptoms of not doing so well or being unwell
- Take action early when they experience physical, mental and social problems
- Build and maintain a strong social network around them





PROSTATE CANCER

TRACKING OUR PROGRESS

- Prostate cancer is the second most common cancer in men
- Globally, more than 1.4 million men will be diagnosed with prostate cancer each year
- More than 5.6 million men are estimated to be living with prostate cancer around the world
- Globally, more than 380,000 men die from prostate cancer each year

WHAT DOES SUCCESS LOOK LIKE

We want fewer men to die from prostate cancer. We want men living with and beyond prostate cancer to have the treatment and care they need to be well, physically and mentally.

Our ambitions are big – that’s why we put funds towards the most innovative projects we can find. Here’s a breakdown of the kinds of projects we’re funding to tackle prostate cancer.

BIOMEDICAL RESEARCH	CLINICAL QUALITY	HEALTH SERVICES	CARE	EDUCATION
<p>Innovative research to diagnose, treat and ultimately cure prostate cancer.</p> <p>Connecting the worldwide research community to work smarter and across borders.</p>	<p>Working with clinicians to improve the standard of treatment and reduce side effects.</p>	<p>Advocating for improvements in health services to reach more men.</p>	<p>Finding ways to improve the standard of care for men and their families.</p>	<p>Ensure that men know when and how to take early action and make the right treatment decisions.</p>




PROSTATE-SPECIFIC MEMBRANE ANTIGEN (PSMA) RESEARCH

For men with advanced or advancing disease, it is important to be able to determine if cancer cells may have spread to distant parts of their bodies, and if so, to where. It's for these men that Prostate-Specific Membrane Antigen – or PSMA – might offer a new hope. PSMA is a protein that sits on prostate cancer cells, that can act both as a marker that can be used to find cancer cells by PET imaging or an agent that can destroy them via a process called radionuclide therapy.

Using PSMA, images of a man's prostate cancer are clearer, and treatments are more targeted to those areas where cancer is present. For men who have exhausted other options, PSMA therapy is proving to be a useful

tool that can both extend and improve quality of life. Unlike chemotherapy which is a broad-brush approach to treating cancer, PSMA is highly specific to prostate cancer cells, which limits the amount of radioactivity other cells are exposed to and reduces the side effects from treatment.

Since 2011 the Movember Foundation has invested more than \$3.7M in supporting global research efforts that build the evidence around the use of PSMA for imaging a man's prostate cancer, and is currently supporting work focused on its use both in imaging as well as treating prostate cancer, and allowing more men with advanced prostate cancer to benefit.



THE INTERNATIONAL REGISTRY FOR MEN WITH ADVANCED PROSTATE CANCER (IRONMAN)

The IRONMAN registry collects information about a man's type of prostate cancer, their treatment and what side effects they may be experiencing. Collecting and researching this information will enable us to better understand what causes prostate cancer, how to stop or slow its progression, and how to provide the best possible care to enable men to live the best quality life possible. More than 5,000 men across 9 countries are expected to join the registry by 2022.

"TrueNTH Ironman is an unprecedented global attempt to characterise how men with prostate cancer are treated, throughout the course of their disease. Part of what's important with this project is that we're really focusing on the patient – and by understanding that at specific time-points in their report, how they're reporting how they feel is unique to any project that we've done or that really has been done. It's going to allow us to integrate that patient perspective into the science of the project itself." Jake Vinson, CEO, Prostate Cancer Clinical Trials Consortium.

"TrueNTH Ironman is an unprecedented global attempt to characterise how men with prostate cancer are treated, throughout the course of their disease."

JAKE VINSON
CEO
PROSTATE CANCER CLINICAL TRIALS
CONSORTIUM

TRUENTH DIGITAL HEALTH

TrueNTH Digital Health empowers the prostate cancer community with the awareness, knowledge and solutions to take positive action for their health and care by delivering the world's best digital resources to improve quality of life of those living with and beyond prostate cancer. It will help educate men on their prostate cancer journey and provide support. The objective is to reach 250,000 men across the world with prostate cancer by December 2022. It is currently being rolled out across Australia, New Zealand, UK, Canada, the U.S and Ireland.

“You can hear other people’s stories and come up with your own plan based on that. TrueNTH is a tremendous resource.”

JIM WILLIAMS
PROSTATE CANCER SURVIVOR



A photograph of two men, an older man on the left and a younger man on the right, both smiling and looking towards the camera. The older man has a mustache and is wearing a light-colored button-down shirt. The younger man is wearing a white t-shirt. The background is slightly blurred, showing what appears to be an indoor setting with some equipment.

TESTICULAR CANCER

TRACKING OUR PROGRESS

- Globally, more than 66,000 men are diagnosed with testicular cancer each year
- Globally, testicular cancer is the second most common cancer among men aged 15-39 years
- More than 330,000 men are estimated to be living with testicular cancer around the world
- Globally, more than 8,600 men die from testicular cancer each year

WHAT DOES SUCCESS LOOK LIKE

We want fewer men to die from testicular cancer. We want them to have the treatment and care they need to be well, physically and mentally. Here are the areas in which we are investing to help men with testicular cancer.

BIOMEDICAL RESEARCH

Innovative research to diagnose, treat and ultimately cure testicular cancer.

Connecting the worldwide research community to work smarter and across borders.

CLINICAL QUALITY

Working with clinicians to improve the standard of treatment and reduce side effects.

HEALTH SERVICES

Advocating for widespread improvements in health services to reach more men.

CARE

Finding ways to improve the standard of care for men and their families.

EDUCATION

Ensure that young men know when and how to take early action.



TRUENTH TESTICULAR CANCER

Testicular Cancer is a largely survivable disease – in the developed world, it celebrates a survival rate better than 95%. It is also the most common cancer diagnosis in young men. This means that while the vast majority of these young men who receive a diagnosis of testicular cancer will survive, they live with the physical and psychological impacts of that diagnosis and treatment for many years. TrueNTH Testicular cancer is a digital support tool that was built using true human centred design techniques to create a revolutionary resource of curated, relevant and useful information for men who are facing a testicular cancer journey in a language that they understand and presented in a way that makes sense to them.

We have committed USD \$500,000 to the project and have released the first version of the website at <http://truenth-tc.org>, however work on the product is on-going and we plan to release new features throughout the coming months to include tools to help men reach out

and make contact with someone who has lived the journey before them, and to better learn more from experts about what to expect. We also continuously seek feedback from users to continually ensure that we are offering a remarkable experience for people who visit the site.

TrueNTH Testicular Cancer is currently available world-wide in English and there are plans to expand the language support of the product to include other countries.

TESTICULAR CANCER AWARENESS MONTH

In April we asked men to get to Know Thy Nuts, and if something doesn't feel right, go to a doctor. It's an important step in detecting testicular cancer early. This year's campaign efforts reached millions and helped encourage young men to engage in their health.



MENTAL HEALTH AND SUICIDE PREVENTION

TRACKING OUR PROGRESS

- 510,000 men die by suicide globally each year, that's about one every minute
- 3 out of 4 suicides are by men

WHAT WE SEEK TO ACHIEVE

The results we seek are for men of all ages to be mentally healthy and take action during tough times, backed by their friends, family and community. This is part of our overarching men's health vision for men to live happy, healthy and longer lives.

OUR STRATEGY FOR MENTAL HEALTH PROGRAMS WILL:

- Focus on prevention & early intervention
- Prioritise scaling the most promising investments
- Provide targeted investment in new ideas that are in line with priority groups and settings
- Scale by establishing direct partnerships, rather than primarily through academic partnerships

OUR 5 PRIORITY AREAS:

01

Indigenous/
First Nations
Young Men

02

Fathers

03

Young Men

04

Online
(as a delivery
setting)

05

Workplaces
(as a delivery
setting)

MAKING CONNECTIONS FOR MENTAL HEALTH AND WELLBEING AMONG MEN OF ALL AGES

A national initiative consisting of 11 projects across the U.S. working with men in community-level prevention projects building resilience and supporting mental health and wellbeing.

Last November, the Making Connections Community of Practice convened in Oakland, U.S. which brought together men and women, of all ages, races and religions from 16 cities across the US, from Hawaii to Boston, Chicago to New Orleans, to learn, share and be challenged. These teams have been developing community-based programs aimed at improving social connections and enhancing mental wellbeing of disadvantaged and minority populations of men including men of colour and veterans. These populations of men are at the greatest risk of social isolation, substance misuse and suicide. The Movember Foundation is funding the work; Prevention

Institute is providing coordination, training, and technical assistance; and a team from the University of South Florida is evaluating progress and outcomes.

“The Making Connections Initiative is an opportunity that allowed underserved communities, like ours, to share their knowledge and concerns when it comes to mental health. For years, our communities were ignored because of a lack of knowledge and structural support. Today, grass root organizations like UWEAST and many others have taken a different approach that no other organizations have done in the past.

The need to address the health concerns of our young men from the East African community was an inevitable question that surrounded us all for a very long time. Working with these young men has already produced future leaders.”



WAY BACK SUPPORT SERVICE FUNDING

The Australian Federal Government's Budget recently committed AUD \$37.6 million to expand The Way Back Support Service over the next 4 years. Initially funded by the Movember Foundation and implemented by our men's health partner, beyondblue, The Way Back Support Service dates back to 2013. The service was initially established with \$2.25 million from the Movember Foundation and \$1 million from beyondblue. We saw a gap that needed to be filled, given that 200 Australians attempt to take their own life every day. The solution will give the Australian population the suicide prevention support they need, when they need it most.

Statistics show that up to a quarter of those discharged from hospital following a suicide attempt will try to take their own lives again in the next three months. Providing support at this point in time is vital and is an area which The Way Back Support Service heavily focuses on. Assigning professional workers to patients during hospital discharge, the program eases patients back into day-to-day life with regular check-ins, a suicide safety plan and ongoing support.

To date, 1,600 people have been through The Way Back Support Service – and suicide by people who have engaged with the service is less than one per cent. The newly-announced funding will help to support the 28,000 people around Australia on discharge from hospital after suicide attempts – expanding to 25 of the 31 Primary Health Network (PHN) regions in partnership with beyondblue, State and Territory Governments, PHNs and hospitals.

This a great, inspiring example of our important role as a 'catalytic funder' – a key aspect of our impact investment strategy. We invest in innovative programs that have the possibility to create real, long-term impact for men's health, and find ways to catalyse implementation to be delivered in an area of need – scaling up what works to provide the greatest reach and benefits.

SUICIDE PREVENTION CAMPAIGN IN SEPTEMBER

This marked the third consecutive year we ran activity around World Suicide Prevention Day. 2016's 'Suicide notes talk too late' was successful in engaging people with the message that men need to talk when times are tough. It attracted a lot of positive comments on social media, but importantly we identified a sizeable minority who said that they'd tried to talk but that it hadn't gone well – people weren't prepared or able to listen, and they'd ended up feeling worse.

We therefore aimed to evolve our 2017 activity, to highlight that whilst we might think we are there for the men in our lives, that might not always be clear to them. We wanted to build the capability and confidence of those who surround men, the "go to" people – developing skills on how to be a good listener, how to build trust in relationships, how to reach out to someone who might be going through a difficult time and to ask how they are.

In order to achieve this, we created three short films, supported by social content, to share across our own channels, and to push out to a wider audience of men and those who support them. These films were well received, and with a limited budget we achieved an impressive reach: the 'UnMute – Ask Him' video achieved 3 million fully trackable views, supplemented by considerable untrackable views. Based on this, we can estimate that over 6-8 million people watched the videos in total.



MOVEMBER FOUNDATION CIRCUMPOLAR

We have funded a unique project that focuses on improving the mental health of Indigenous males in Northern communities of Canada through the use of land-based programming. This includes organizations from Nunavut, Northwest Territories, Yukon, Newfoundland and Labrador. The goal of this three-year project is to evaluate the effectiveness of the programs and to share those findings with the global community.

Within Canada, there is a North-South disparity in the impact of mental health issues, including suicide, suicidal behaviour, and addictions, on individuals and communities. Indigenous male youth are disproportionately affected, with suicide

rates from 3 to 11 times higher than their non-Indigenous peers. The disparity appears to arise from a context of broader social inequality, and its magnitude underscores the need for action.

Recent research has begun to focus on identifying protective and resiliency factors, such as the ability to cope with stress, social support, work satisfaction, self-esteem, and a mastery of skills, which are considered helpful to improving mental health. In a Northern Circumpolar context, factors such as cultural revitalization, connectedness to parents and role models, and learning and practising culture appear to contribute positively to mental health and wellbeing.

A photograph of two children walking away from the camera on a vast, flat, snow-covered landscape. The child on the left is wearing a dark jacket with a fur-lined hood and dark pants. The child on the right is wearing a blue and black jacket and dark pants. The sky is a soft mix of pink, orange, and blue, suggesting sunset or sunrise. The overall mood is quiet and contemplative.

“Within Canada, there is a North-South disparity in the impact of mental health issues.”

MAN UP DOCUMENTARY

Man Up is a three-part documentary series and social awareness campaign funded by the Movember Foundation in Australia and hosted by Triple M radio personality Gus Worland. It aimed to get to the bottom of the male suicide crisis, effect real social change and hopefully even save lives.

Research findings on Man Up were recently published in the world renowned BMJ Journal of Epidemiology and Community Health. The research findings were conducted by the University of Melbourne.

The publication of the paper lets the world know about the significant impact of these findings not just on men's mental health and help-seeking, but also the fact that it demonstrates the impact that these mass health promotion activities can have to drive meaningful change.

Here are some insights from the publication:

"Our trial demonstrates the potential for men's health outcomes to be positively impacted by novel, media based public health interventions that focus on traditional masculinity."

"Men who viewed Man Up in our trial demonstrated significant changes in attitudes. After viewing the documentary, they indicated that they were more likely to seek help if they were facing difficulties and more likely to recommend that a friend do the same. They also demonstrated a shift in their conformity to traditional masculine norms."

**"Men who viewed Man Up
in our trial demonstrated
significant changes in
attitudes."**



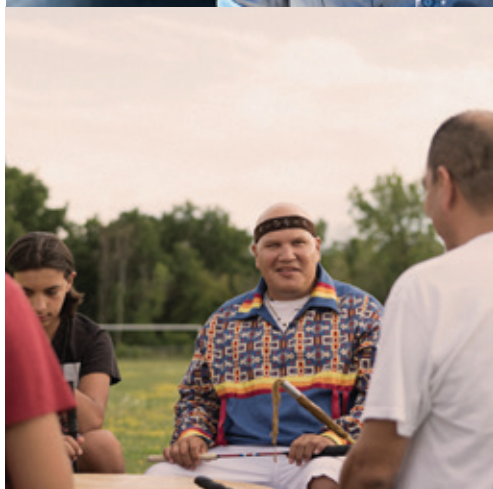
OUR COMMUNITY

THANK YOU TO OUR ROCKSTARS - THE MOVEMBER COMMUNITY, WE'RE YOUR BIGGEST FANS!

Whether watching a Mo Bro having their precious long beard shaved off in Movember, cheering on a Mo Sista running a half marathon for the first time for men's health or working at our Mo HQs around the world... there's not a moment where we don't feel incredibly grateful for all the epic year-round fundraising achievements by Mo growers and supporters.

The Movember Community's passion for our causes is at the heart of everything we do.

We have drawn on their powerful stories for inspiration. From how they have made positive changes in their own lives to helping impact the lives of those around them through raising awareness for men's health - our community are living examples of the Movember Foundation's message. They have been truly brave in sharing their stories with us and are the reason we are empowered to help change the face of men's health.



HIGHLIGHTS



HIGHLIGHTS



OUR FINANCIALS

The Movember Foundation delivered another strong result in the year ended 30 April 2018 and proudly raised AUD \$88 million from Movember campaigns globally, generating an increase in donation revenue in the current year, with over 300,000 participants registered for the campaign. Revenue from sources outside the annual campaign continue to grow; the second year of the partnership with the Distinguished Gentleman's Ride generated revenue of \$6.7M.

The organisation's programmatic activity continues to produce outstanding outcomes

for men's health. During the year the Foundation expended \$51.1M in our key investment areas of Prostate and Testicular Cancer bio-medical research and survivorship, Men's Health and Suicide Prevention, and Men's Health promotion including awareness and education.

The organisation continues to implement a year-round diversified fundraising strategy. The Movember Foundation is committed to a long-term future and has ambitious plans in place to ensure it is well placed to deliver on its strategic goals in the area of men's health.

FUNDS RAISED AND REGISTERED PARTICIPANTS 2017 (RAISED THROUGH TO APRIL 2018)

	Funds Raised in \$AUD millions	Registered Participants	Year of first fundraising campaign
Australia	24.1	73,208	2004
New Zealand	1.6	8,513	2006
UK	14.0	50,475	2007
Canada	17.7	56,000	2007
USA	22.2	67,490	2007
Ireland	1.2	4,140	2008
Mainland Europe Countries	6.2	35,805	2011
Asia	0.6	1,396	2012
Rest of World	0.4	4,916	2012
Total	88.0	301,943	

FUNDRAISING AND ADMINISTRATION COSTS

The work that the Movember Foundation carries out and the health benefits achieved for men cannot happen without the associated costs of fundraising and administration.

From each dollar raised, we spend 16.5 cents on fundraising. This is higher than the three-year rolling average of 14.2 cents, as during the 2017 year we invested in new fundraising strategies that will generate a return over a number of years. In short, we expect to raise more funds for Men's Health in 2018 and beyond, due to these 2017 investments.

We strive to minimise administration costs, and have maintained these at 6.3 cents through global efficiencies and resource sharing. Our shared costs structure avoids duplicating functions such as finance, human resources, legal and technology across the world while making the necessary investments in technology and our people to keep pace with the global economy. We aim to spend every dollar wisely and achieve maximum value from every investment decision made.

FUNDS RETAINED

The Movember Foundation has retained 4.9% of the funds raised from during the year to April 2018, to add to existing retained general funds. This is to cover future campaigns and ensure the long-term continuity of the organisation.

Our retained general funds are being progressively built over multiple campaigns and once the Board of Directors are satisfied the general funds are at a sufficient level (enough to cover 9 to 12 months' operating costs), no further funds will be retained.

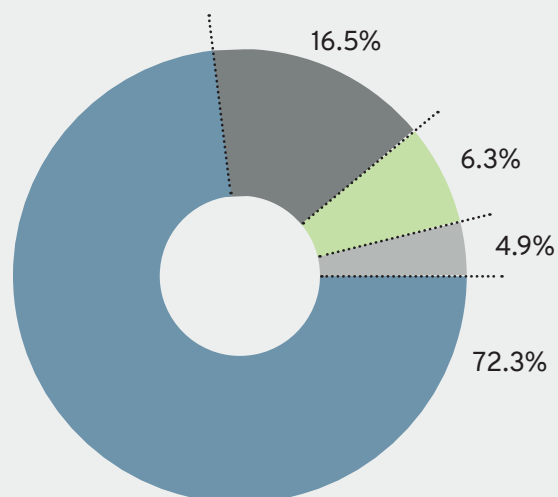
PROGRAMS INVESTMENTS

In the year to 30 April 2018, the Foundation has achieved net funds raised for investment in men's health programs of 72.3 cents for every dollar raised. In dollar terms this was AUD \$64 million raised for investment in programs that will benefit men world-wide.

The Movember Foundation continues to invest its net funds into programs that support prostate cancer, testicular cancer, cancer-survivorship, suicide prevention and mental health. These investments are made via our Men's Health Partners and through our own direct global collaborative programs and our awareness and education program. Refer to earlier pages of this annual report for further details of our program investments and to the Report Cards section of the Movember Foundation website.

For every \$1 raised, we spend 72.3 cents on men's health programs.

THE FOUNDATION'S TOTAL FUNDS RAISED HAVE BEEN ALLOCATED FOR USE AS FOLLOWS:



2018 MOVEMBER FOUNDATION CONSOLIDATED GROUP

Men's health programs	72.3%	
Fundraising costs	16.5%	
Administration	6.3%	
Retained funds	4.9%	

“For every \$1 raised, we spend 72.3 cents on men's health programs.”

CASH HOLDINGS

At 30 April 2018, the Movember Foundation held the following in cash and cash related assets:

Cash and cash equivalents	82M
Term Deposits and Bonds	81M
Total	163M

The majority (**\$135m / 83%**) of these cash assets are held for investment in men's health programs and the balance of **\$28M / 17%** is retained to fund ongoing operating costs. The cash assets will be used as follows:

Payments for programs being carried out by Men's Health Partners	38M
Restricted reserves for current Movember Foundation managed programs	97M
Retained for working capital / operating costs	28M
Total	163M

The Movember Foundation invests only in world class programs that are aligned with our strategic goals, and only where it is demonstrated that we can have the greatest impact on men's health.

We undertake a rigorous approach to program investment that involves a peer reviewed process, due diligence on selected implementation partners and the establishment of independent governance committees. All Men's Health Partners and implementation partners for the Movember Foundation managed programs, are held accountable for driving outcomes that ensure current and future funding achieves significant results. These rigorous investment processes together with the linking of partner payments to milestone achievements, are key to ensuring that Movember Foundation's accumulated cash assets are both invested wisely and spent on a timely basis. The majority of the above listed amounts will be spent on programmatic work within the next three years.

After meeting the above noted program commitments, the balance of our cash holdings (AUD \$28 million) will be retained in a general reserve to provide working capital and ensure that the Foundation has adequate funds for investment in future fundraising activities. As the majority of Movember Foundation's revenue is currently derived from one annual campaign, the Movember Foundation Board has adopted a fiscally conservative approach to risk management and is working towards the accumulation of a general reserve equivalent to 9 to 12 months' coverage of costs.

The Movember Foundation manages its cash holdings within a conservative treasury policy adopted by the Foundation's global board. We select financial institutions with reference to external credit ratings. Cash Investments are held with financial institutions with at least an AA or A rating and exposure is minimised by spreading cash holdings across a number of institutions. Currently our cash and financial investments are held across a large number of institutions globally.

CONSOLIDATED STATEMENT OF COMPREHENSIVE INCOME FOR THE PERIOD ENDING 30 APRIL 2018

	NOTES	2018 (\$)	2017 (\$)
REVENUE			
Revenue from continuing operations		86,907,714	78,804,577
Program expenditures	1	(51,061,738)	(54,714,525)
Fundraising expenditure		(14,523,574)	(9,990,876)
Administration expenditure		(5,551,736)	(5,062,451)
Surplus	2	15,770,666	9,036,725
OTHER COMPREHENSIVE INCOME			
Exchange differences on translation of foreign operations		2,886,830	(3,830,359)
Total comprehensive surplus for the year		18,657,496	5,206,366

SUMMARISED MOVEMBER GROUP BALANCE SHEET AS AT 30 APRIL 2018

	NOTES	2018 (\$)	2017 (\$)
ASSETS			
Current Assets			
Cash and cash equivalents	3	81,833,297	78,484,011
Financial assets	3	66,148,918	67,734,941
Trade and other receivables		5,947,082	2,370,917
Inventory		3,530	139,323
Total current assets		153,932,827	148,729,192
Non-current assets			
Financial assets	3	15,149,019	19,492,818
Plant and equipment		2,687,714	397,683
Total non-current assets		17,836,733	19,890,501
Total assets		171,769,560	168,619,693
LIABILITIES			
Current liabilities			
Trade and other payables	4	40,961,414	57,082,991
Provisions		1,058,598	1,027,222
Total current liabilities		42,020,012	58,110,213
Non-current Liabilities			
Provisions		28,551	14,598
Other payables		666,515	97,896
Total non-current liabilities		695,066	112,494
Total liabilities		42,715,078	58,222,707
Net assets		129,054,482	110,396,986
EQUITY			
Restricted reserves for programs		96,511,041	84,958,660
Foreign currency translation reserve		8,365,829	5,478,999
Retained surplus (unrestricted reserves)		24,177,612	19,959,327
Total equity		129,054,482	110,396,986

NOTE 1: MEN'S HEALTH PROGRAM INVESTMENT

	2018 (\$)	2017 (\$)
PROGRAMS EXPENDITURE		
Prostate and Testicular Cancer Biomedical Research	14,365,484	15,381,545
Prostate and Testicular Cancer Survivorship and Health Outcomes	8,804,185	10,683,785
Mental Health & Suicide Prevention	12,566,353	16,866,512
Men's Health Programs and Health Promotion	15,325,716	11,782,683
Total	51,061,738	54,714,525

NOTE 2: NET SURPLUS

In the year to April 2018, a net surplus after operating expense for the period of \$15,770,666 (2017: \$9,036,725) was recorded. The net surplus resulted from a timing gap between the raising of funds and the associated programs expenditure outflows which will occur in future years.

NOTE 3: CASH AND CASH EQUIVALENTS AND FINANCIAL ASSETS

	2018 (\$)	2017 (\$)
Cash at bank and on hand	57,489,892	32,182,967
Deposits	24,343,405	46,301,044
	81,833,297	78,484,011
Current term deposits	66,148,918	67,734,941
Non-current term deposits and bonds	15,149,019	19,492,818
Total cash and financial assets	163,131,234	165,711,770

These cash assets are held for utilisation as follows:

Grant distributions awarded to men's health partners	37,893,726	51,485,334
Restricted for Movember Foundation managed programs	96,511,041	84,958,660
Retained for working capital / operating costs	28,726,467	29,267,776
Total	163,131,234	165,711,770

NOTE 4: TRADE AND OTHER PAYABLES

	2018 (\$)	2017 (\$)
Accrued expenses	2,154,899	2,777,406
Other payables	912,789	2,820,251
Program expenditure payable to Men's Health Partners	37,893,726	51,485,334
Total	40,961,414	57,082,991

Distributions payable are recognised at the time of an agreement being signed that confirms the amount and timing of distributions payable. The payment timing for some distributions are dependent on the achievement of project milestones.

NOTE 5: BASIS OF PREPARATION

These summary financial statements have been prepared on an accruals basis under the historical cost convention and have been prepared in accordance with the measurement, recognition and presentation requirements of all Australian Accounting Standards and accounting policies as set out in the audited financial report of the Movember Foundation Trust upon which an unqualified audit report was issued on 16 August 2018.

TRUSTEE'S DECLARATION

These summary financial statements have been derived from the audited financial report of the Movember Foundation Trust for the year ended 30 April 2018 in accordance with accounting policies described in Note 1 to the audited financial report. The summary financial statements should be read in conjunction with the audited financial report, available upon request at our registered office at Level 4, 21-31 Goodwood Street, Richmond VIC 3121.

In the Trustee company directors' opinion:

- a. The summary financial statements:
 - i. are consistent with the audited financial report of the Movember Foundation Trust for the year ended 30 April 2018; and
 - ii. presents fairly the Foundation's financial position as at 30 April 2018 and its performance for the financial year ended on that date.
- b. There are reasonable grounds to believe that the Foundation will be able to pay its debts as and when they become due and payable.

This declaration is made in accordance with a resolution of the directors.



JOHN HUGHES
CHAIRMAN

MELBOURNE
22 AUGUST 2018



Independent Auditor's Report

To the Directors of the Trustee company of The Movember Foundation Trust and its controlled entities

Opinion

We report on the **Summarised Financial Statements** of The Movember Foundation Trust and its controlled entities (**Group**) as at and for the year ended 30 April 2018. The Summarised Financial Statements are derived from the audited Financial Report of the **Group** (the Audited Financial Report).

In our opinion, the accompanying Summarised Financial Statements of the **Group** are consistent, in all material respects, with the Audited Financial Report, in accordance with the basis of preparation described in Note 5 to the Summarised Financial Statements.

The **Summarised Financial Statements** comprise:

- Summarised consolidated statement of comprehensive income for the year ended 30 April 2018.
- Summarised Movember Group balance sheet as at 30 April 2018.
- Related notes.

The Summarised Financial Statements are contained in the Movember Foundation Annual Report 2018 on pages 24 to 30.

The **Group** consists of The Movember Foundation Trust (the Trust) and the entities it controlled at the year end or from time to time during the financial year.

Scope of the Summarised Financial Statements

The Summarised Financial Statements do not contain all the disclosures required by Australian Accounting Standards applied in the preparation of the Audited Financial Report. Reading the Summarised Financial Statements and this Auditor's Report thereon, therefore, is not a substitute for reading the Audited Financial Report and our auditor's report thereon.

The Summarised Financial Statements and the Audited Financial Report do not reflect the effects of events that occurred subsequent to the date of our auditor's report on the Audited Financial Report.

The Audited Financial Report and our auditor's report thereon

We expressed an unmodified audit opinion on the Audited Financial Report in our auditor's report dated 16 August 2018.

Other Information

Other Information is financial and non-financial information in The Movember Foundation's Annual Report 2018 which is provided in addition to the Summarised Financial Statements and this Auditor's Report. The Directors are responsible for the Other Information.

Our opinion on the Summarised Financial Statements does not cover the Other Information and, accordingly, we do not express an audit opinion or any form of assurance conclusion thereon.



In connection with our audit of the Summarised Financial Statements, our responsibility is to read the Other Information. In doing so, we consider whether the Other Information is materially inconsistent with the Summarised Financial Statements or our knowledge obtained in the audit, or otherwise appears to be materially misstated.

We are required to report if we conclude that there is a material misstatement of this Other Information, and based on the work we have performed on the Other Information that we obtained prior to the date of this Auditor's Report we have nothing to report.

Responsibility of the Directors for the Summarised Financial Statements

The Directors are responsible for the preparation of the Summarised Financial Statements in accordance with the basis of preparation described in Note 5 to the Summarised Financial Statements, including their derivation from the Audited Financial Report of the Group as at and for the year ended 30 April 2018.

Auditor's responsibility for the Summarised Financial Statements

Our responsibility is to express an opinion on whether the Summarised Financial Statements are consistent, in all material respects, with the Audited Financial Report based on our procedures, which were conducted in accordance with *Australian Auditing Standard ASA 810 Engagements to Report on Summary Financial Statements*.

A stylized, handwritten-style signature of the KPMG firm.

KPMG

A handwritten signature of Dana Bentley.

Dana Bentley

Partner

Melbourne

22 August 2018

MOVEMBER FOUNDATION USA

SUMMARY STATEMENTS OF ACTIVITIES

AND CHANGES IN NET ASSETS FOR THE YEARS ENDED APRIL 30, 2018 AND 2017

	2018 \$USD	2017 \$USD
CHANGES IN UNRESTRICTED NET ASSETS		
SUPPORT AND REVENUE		
Fundraising contributions received	16,989,270	16,286,551
Sales of goods	193,171	174,542
Interest and other income	107,956	51,344
Total support and revenue	17,290,397	16,512,437
EXPENSES		
Program		
Men's Health Programs	3,983,861	4,072,168
Funds donated and program delivery payments	6,940,128	7,535,958
Administration	1,139,056	1,255,237
Fundraising	2,721,305	2,567,741
Total expenses	14,784,350	15,431,104
Increase in unrestricted net assets	2,506,047	1,081,333
Unrestricted net assets at beginning of year	11,783,974	10,702,641
Unrestricted net assets at end of year	14,290,021	11,783,974

MOVEMBER FOUNDATION USA

SUMMARY STATEMENTS OF

FINANCIAL POSITION AS AT

APRIL 30, 2018 AND 2017

	2018 \$USD	2017 \$USD
ASSETS		
Current assets		
Cash and cash equivalents	17,257,682	18,159,106
Accounts and other receivables	561,356	58,741
Net related party receivable	250,106	576,982
Inventory	2,676	24,374
Prepaid expenses	212,861	77,095
Total current assets	18,284,681	18,896,298
 Property and equipment, net	 29,064	 24,433
Other assets		
Deposits	101,119	75,501
Total assets	18,414,864	18,996,232
 LIABILITIES AND NET ASSETS		
Current liabilities		
Accounts payable	193,951	304,789
Accrued expenses	172,241	163,499
Payments received in advance	346,170	1,841,186
Payable to Men's Health Partners	3,412,481	4,902,784
Total current liabilities	4,124,843	7,212,258
 Net assets		
Unrestricted		
Board designated for Men's Health Programs	9,497,130	7,261,702
Undesignated	4,792,891	4,522,272
Total net assets	14,290,021	11,783,974
Total liabilities and net assets	18,414,864	18,996,232

AUDIT REPORT

REPORT OF THE INDEPENDENT AUDITORS ON THE SUMMARY FINANCIAL STATEMENTS OF MOVEMBER FOUNDATION

The accompanying summary financial statements, which comprise the summary statements of financial position as of April 30, 2018 and 2017 and the summary statements of activities and changes in net assets for the years then ended, are derived from the audited financial statements of Movember Foundation as of and for the years ended April 30, 2018 and 2017. We expressed an unmodified audit opinion on those audited financial statements in our report dated August 16, 2018. The audited financial statements, and the summary financial statements derived therefrom, do not reflect the effects of events, if any, that occurred subsequent to the date of our report on the audited financial statements.

The summary financial statements do not contain all the disclosures required by accounting principles generally accepted in the United States of America. Reading the summary financial statements, therefore, is not a substitute for reading the audited financial statements of Movember Foundation.

MANAGEMENT'S RESPONSIBILITY FOR THE SUMMARY FINANCIAL STATEMENTS

Management is responsible for the preparation of the summary financial statements on the basis described in Note 1.

AUDITOR'S RESPONSIBILITY

Our responsibility is to express an opinion about whether the summary financial statements are consistent, in all material respects, with the audited financial statements based on our procedures, which were conducted in accordance with auditing standards generally accepted in the United States of America. The procedures consisted principally of comparing the summary financial statements with the related information in the audited financial statements from which the summary financial

statements have been derived, and evaluating whether the summary financial statements are prepared in accordance with the basis described in Note 1. We did not perform any audit procedures regarding the audited financial statements after the date of our report on those financial statements.

OPINION

In our opinion, the summary financial statements of Movember Foundation as of and for the years ended April 30, 2018 and 2017 referred to above are consistent, in all material respects, with the audited financial statements from which they have been derived, on the basis described in Note 1.

HBLA Certified Public Accountants, Inc.

Irvine, California
22 August, 2018

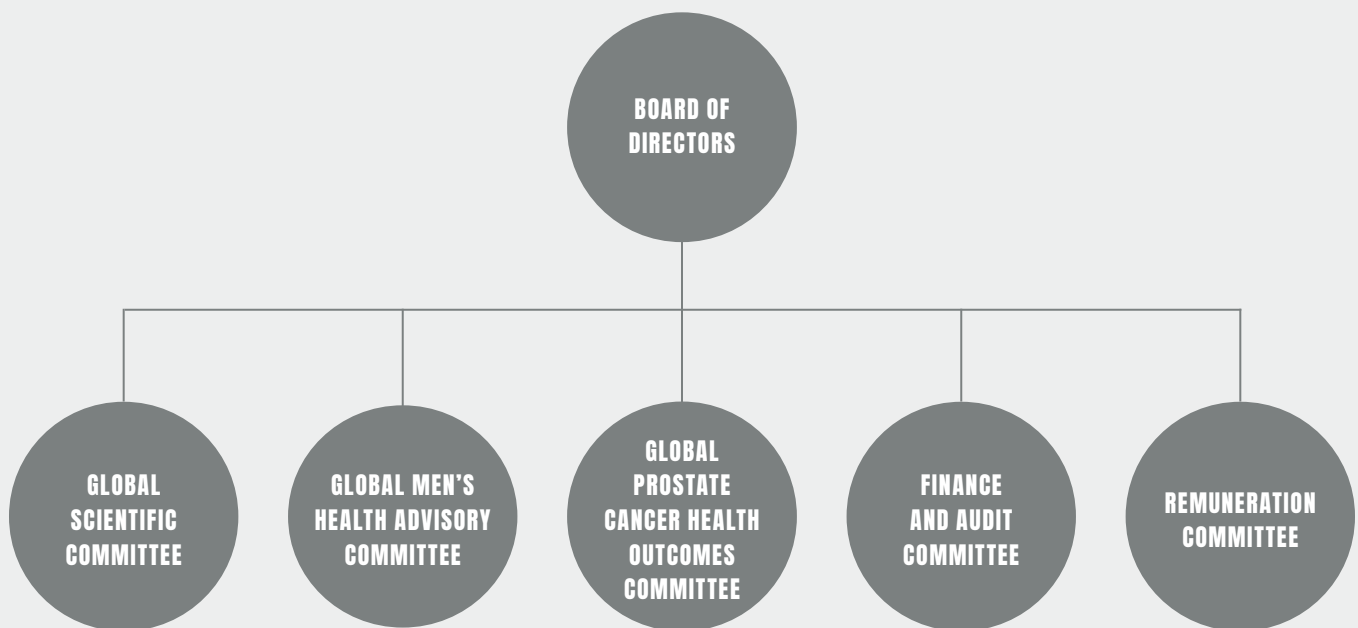
NOTE 1

The summary financial statements are an extract of the audited financial statements of Movember Foundation prepared in accordance with accounting principles generally accepted in the United States of America. The extracts chosen are considered important amounts necessary for the understanding of the financial position of Movember Foundation.

GOVERNANCE

The Movember Foundation is registered with the Australian Charities and Not-for-profits Commission (ACNC). As a charity operating across the globe, the Movember Foundation complies with a range of regulatory and governance obligations. We take these obligations very seriously and the Foundation is committed to best practice levels of transparency, accountability and governance.

The Movember Foundation's governance framework is available on our website. These policies are regularly reviewed to ensure that our governance framework reflects best practice and the particular needs of the charitable sector in each of the countries in which we operate.



THE MOVEMBER FOUNDATION BOARD OF DIRECTORS

The Movember Foundation is governed by a Board of Directors, who are accountable to the Movember community and general public. Its role is to ensure the Foundation maintains the highest standards of performance, governance, accountability, transparency and cost to fundraising ratios.

The Board annually reviews the performance of the CEO. Our Board is skills-based, with members collectively bringing a wide range of expertise and experience. In keeping with the Movember Foundation's focus on minimising administrative costs, all Board members are unpaid for their directorships.

BOARD COMMITTEES

The Board delegates part of its work to specialised committees which report to the Board, these include:

GLOBAL SCIENTIFIC COMMITTEE

(and specific Research Advisory Committees)

Assists the Board by:

- Overseeing implementation of the Movember Foundation's Global Action Plan (GAP), an international research collaboration initiative that is accelerating outcomes by providing researchers from around the world the opportunity to work together on specific projects
- Providing strategic thought leadership and advice on prostate and testicular cancer research undertaken by the Movember Foundation's men's health partners

GLOBAL PROSTATE CANCER OUTCOMES COMMITTEE

Assists the Board by:

- Providing strategic thought leadership, oversight, review and advice on prostate cancer survivorship solutions, programs and interventions.

GLOBAL MEN'S HEALTH ADVISORY COMMITTEE

Assists the Board by:

- Overseeing implementation of the Movember Foundation's Global Men's Health Strategy
- Informing the prioritization of men's health investment opportunities
- Providing strategic thought leadership on opportunities and gaps in the field of men's health and wellbeing

FINANCE AND AUDIT COMMITTEE

Assists the Board by:

- Ensuring the reliability and integrity of information, including financial information, prepared for use by the Board
- Ensuring the integrity of internal controls and governance structures
- Appointing and supervising appropriate parties (including external parties) in carrying out internal audits
- Appointing and supervising external audits

REMUNERATION COMMITTEE

Assists the Board by:

- Setting the organisation's remuneration policy to ensure that the Movember Foundation continues to attract and retain great staff

GLOBAL BOARD MEMBERS

JOHN HUGHES

CHAIR

John brings with him over 35 years banking experience. John retired from Macquarie bank in 2014 as executive director and Global Head of Macquarie's Principal Equity Investment Group managing a portfolio of global assets. John is also a Director at Palisade Investment Partners and Member of the Infrastructure Advisory board at First State Super.

OWEN SHARP

CEO AND EXECUTIVE DIRECTOR

Owen joined Movember in 2015, initially as COO, having spent five years as CEO at Prostate Cancer UK where he oversaw the significant growth and development of the charity in order to get the cause of prostate cancer well and truly on the map.

PAUL VILLANTI

EXECUTIVE DIRECTOR, PROGRAMS

Paul oversees the Movember Foundation's program investments in prostate cancer, testicular cancer and mental health initiatives globally. He serves as a Director on the Board of Prostate Cancer Foundation (USA). Over the past 20 years Paul has successfully led and built businesses in Australia across the infrastructure, technology, property and telecommunications sectors.

ANDREW GIBBINS

NON-EXECUTIVE DIRECTOR

Andrew brings over 17 years experience in private business strategy, operations, logistics and property development. Andrew has been a Director of the Movember Foundation since the Board was created in 2007.

PROF. COLLEEN NELSON

NON-EXECUTIVE DIRECTOR

Prof. Nelson is Professor and Chair, Prostate Cancer Research, Institute of Health and Biomedical Science, Queensland University of Technology.

NICK REECE

NON-EXECUTIVE DIRECTOR

Nick is Director of Strategy, Policy and Projects, at the University of Melbourne and a Principal Fellow with the Melbourne School of Government. Nick has worked as a senior adviser in the Office of the Prime Minister of Australia and for two Australian State Premiers. He is also a Councillor and Chair of Planning for the City of Melbourne.

KATHERINE HOWARD

NON-EXECUTIVE DIRECTOR

Katherine has a Global and Asia Pacific Relationship Partner role for Deloitte with responsibility for large and complex global financial services clients. Katherine has more than 20 years of global experience in financial services. Katherine prior to joining Deloitte spent 14 years working for Macquarie Group across a number of areas and geographies.

SIMON TRAYNOR

NON-EXECUTIVE DIRECTOR

Simon brings more than 20 years of experience in building and managing high profile, international sports, lifestyle, fashion and outdoor brands. He is currently a marketing consultant and has enjoyed an executive career with Nike Europe, Quiksilver Asia Pacific, Coleman Asia Pacific and YETI ANZ. Simon is a graduate member of the Australian Institute of Company Directors and holds a Master of Business, majoring in Marketing.

KELLIE JOHNSTON

NON-EXECUTIVE DIRECTOR

Kellie is an accomplished marketing leader with more than 20 years' experience across the full spectrum of marketing and communications, including brand, digital, multi-channel lifecycle strategy, segmentation, value proposition development, advertising, issues management, public relations, corporate communication, government relations and internal communication. Kellie has managed large marketing and communication teams and led the conception and delivery of major marketing campaigns across multiple categories. Kellie currently holds the position of General Manager Brand and Content at Australian Unity.

GLOBAL SCIENTIFIC COMMITTEE

PROF. COLLEEN NELSON

GLOBAL SCIENTIFIC CHAIR

Professor and Chair, Prostate Cancer Research, Institute of Health and Biomedical Science, Queensland University of Technology

DR. ROBERT BRISTOW, MD

Clinician-Scientist and Professor at the University of Toronto

DR. JONATHAN W. SIMONS, MD

President and CEO, Prostate Cancer Foundation (PCF)

PAUL VILLANTI

Executive Director, Programs, Movember Foundation

DR. CAROLINE MOORE

Senior Clinical Researcher, University College London Hospital

WESTLEY SCHOLES

Prostate Cancer Patient Advocate

PROF. SILKE GILLESSEN

Senior Consultant, Medical Oncology-Hematology Department, Kantonsspital St. Gallen

DR. THEODORUS VAN DER KWAST

Consultant urogenital pathology at University Health Network

DR. ROBERT REITER

Professor of Urology, Member Molecular Biology Institute, Director of Genitourinary Oncology

PROF. JEFF HOCH

Professor and Chief, Division of Health Policy and Management, Department of Public Health Sciences at UC Davis Health

PROF. GERHARDT ATTARD

Professor of Department of Oncology, University College London Cancer Institute

PROF. JACK SCHALKEN

(TRANSITIONED OFF THE GSC IN MARCH 2018)

Department of Urology, Radboud University Nijmegen Medical Centre, The Netherlands

A/PROF. BILL WATSON

(TRANSITIONED OFF THE GSC IN MARCH 2018)

Associate Professor of Cancer Biology, UCD School of Medicine and Medical Science, University College Dublin

GLOBAL PROSTATE CANCER OUTCOMES COMMITTEE

PROFESSOR DAME JESSICA CORNER, DBE

Pro-Vice-Chancellor (Research and Knowledge Exchange), University of Nottingham

DR. JENS DEERBERG-WITTRAM

Executive Director, The Boston Consulting Group, Germany
Member of the Executive Board, International Consortium for Health Outcomes Measurement (ICHOM).

DR. MARGARET FITCH

Professor (Adjunct) in the Bloomberg Faculty of Nursing and Professor in the School of Graduate Studies at the University of Toronto.

DR. MIKE GLODE

Professor Emeritus of Medicine, University of Colorado Health Sciences Center, Harvard University, USA

PROFESSOR VILLIS MARSHALL AC

Chair Australian Commission on Safety and Quality in Health Care
Chair ACSQHC, Commonwealth Government, Australia

GLOBAL MEN'S HEALTH ADVISORY COMMITTEE MEMBERS

DON MCCREARY

CHAIR

Men's Health Consultant and owner, DRM Scientific Consulting

SUSAN BEATON

Principal Consultant, Susan Beaton Consulting

ALAIN BRUNET

Associate Professor, Department of Psychiatry, McGill University

EHON CHAN

Executive Director, Social Entrepreneurship, Malaysian Global Innovation & Creativity Centre (MaGIC)

JUDY Y. CHU

Affiliated Faculty member, Program in Human Biology, Stanford University

STEVEN CUMMINS

Professor of Population Health, London School of Hygiene and Tropical Medicine

NANCY RHODES

Assistant Professor, School of Communication, Ohio State University

JON WILLIS

Research Director, Poche Centre for Indigenous Health, University of Queensland

FINANCE AND AUDIT COMMITTEE

KATHERINE HOWARD

CHAIR

Non-Executive Director

ANDREW GIBBINS

Non-Executive Director

JOHN HUGHES

Chairman, Movember Foundation

REMUNERATION COMMITTEE

ANDREW GIBBINS

CHAIR

Non-Executive Director

NICK REECE

Public Policy Fellow, University of Melbourne

KATHERINE HOWARD

Corporate Finance Partner, Deloitte Touche Tohmatsu

EXECUTIVE LEADERSHIP TEAM

OWEN SHARP

CEO

PAUL VILLANTI

Executive Director, Programs

ELAINE FARRELLY

Chief Strategic Officer

MARK WALDRON

Chief Operating Officer

CHARLOTTE WEBB

Chief Fundraising & Development Officer

JULIETTE SMITH

Interim Chief Marketing Officer

CAROLINE QUINN

Interim Chief of People and Culture

CHARTER AND POLICIES

The Board works to a Charter and a number of Governance Policies. The Board Charter provides a guiding framework for the corporate governance of the Movember Group and covers the role of the Board and the composition and operating principles of the Board. A Code of Conduct for Directors and Officers has also been adopted.

All Directors, individually and as a Board are required upon appointment to agree to act in accordance with the Board Charter, the

Code of Conduct and the Policies. A copy of the Governance Policies which includes all these elements is available on the Movember Foundation website.

MEETINGS OF DIRECTORS

Seven Board meetings were held in the 2017-18 financial year. The Finance and Audit Committee met three times, and the Remuneration Committee met once.

STRUCTURE

AUSTRALIA

The Movember Foundation is an Australian based not for profit, unincorporated trust, Australian Business Number 48 894 537 905 which is run by The Movember Group Pty Ltd as Trustee (ACN 119 012 243). Movember Group Pty Ltd is owned by three shareholders - Travis Garone, Justin Coghlan and Adam Garone. As at the date of this report the shareholders are not directors of the Movember Foundation.

Movember Foundation uses intellectual property under an exclusive licence agreement with Movember IP Pty Ltd. The licence includes the right to use the 'Movember' and associated trademarks. Movember IP Pty Ltd is owned by four shareholders – the original Founders of Movember Foundation; Travis Garone, Luke Slattery, Adam Garone and Justin Coghlan.

The Movember Foundation has been granted Deductible Gift Recipient status in Australia and as such all donors are entitled to a tax receipt and a full tax deduction for their donations. During the 17-18 financial year, the Movember Group Pty Ltd as trustee for the Movember Foundation ran the Movember campaign in Australia, and also in New Zealand, South Africa, and the Emerging Movember countries.

USA

Movember Foundation is a registered US entity (EIN 77-0714052) and runs the Movember campaign in the US. Movember Foundation is a not for profit organisation that is exempt from

Federal income tax under section 501(c)(3) of the Internal Revenue Code and contributions to Movember in the US are deductible under section 170 of the Code. The Movember Group Pty Ltd as trustee for the Movember Foundation is the sole member of Movember Foundation.

EUROPE

Movember Europe runs the Movember campaign in the UK and Europe. Movember Europe is a company limited by guarantee in England and Wales (company no. 7275694). It is a registered charity in England and Wales (charity no. 1137948), in Scotland (charity no. SC041981) and in Ireland (charity no. 20105280). The Movember Group Pty Ltd as Trustee for the Movember Foundation is the sole member of Movember Europe.

Movember Europe Trading Limited is a company limited by share capital (company number 7604578), and is used for the trading activities associated with the UK campaign. Movember Foundation e.V. is a registered association in Germany.

CANADA

Movember Canada runs the Movember campaign in Canada. Movember Canada is a not for profit corporation (company no. 767531-3) and is a registered charity (charity no. 84821 5604 RR0001). The Movember Group Pty Ltd as Trustee for the Movember Foundation is the sole member of Movember Canada.



**MOVEMBER®
FOUNDATION**

**MOVEMBER TEAM
PO BOX 60
EAST MELBOURNE VICTORIA 8002
AUSTRALIA**

**1300 GROW MO
(1300 4769 66)**

**WWW.MOVEMBER.COM
INFO@MOVEMBER.COM**